

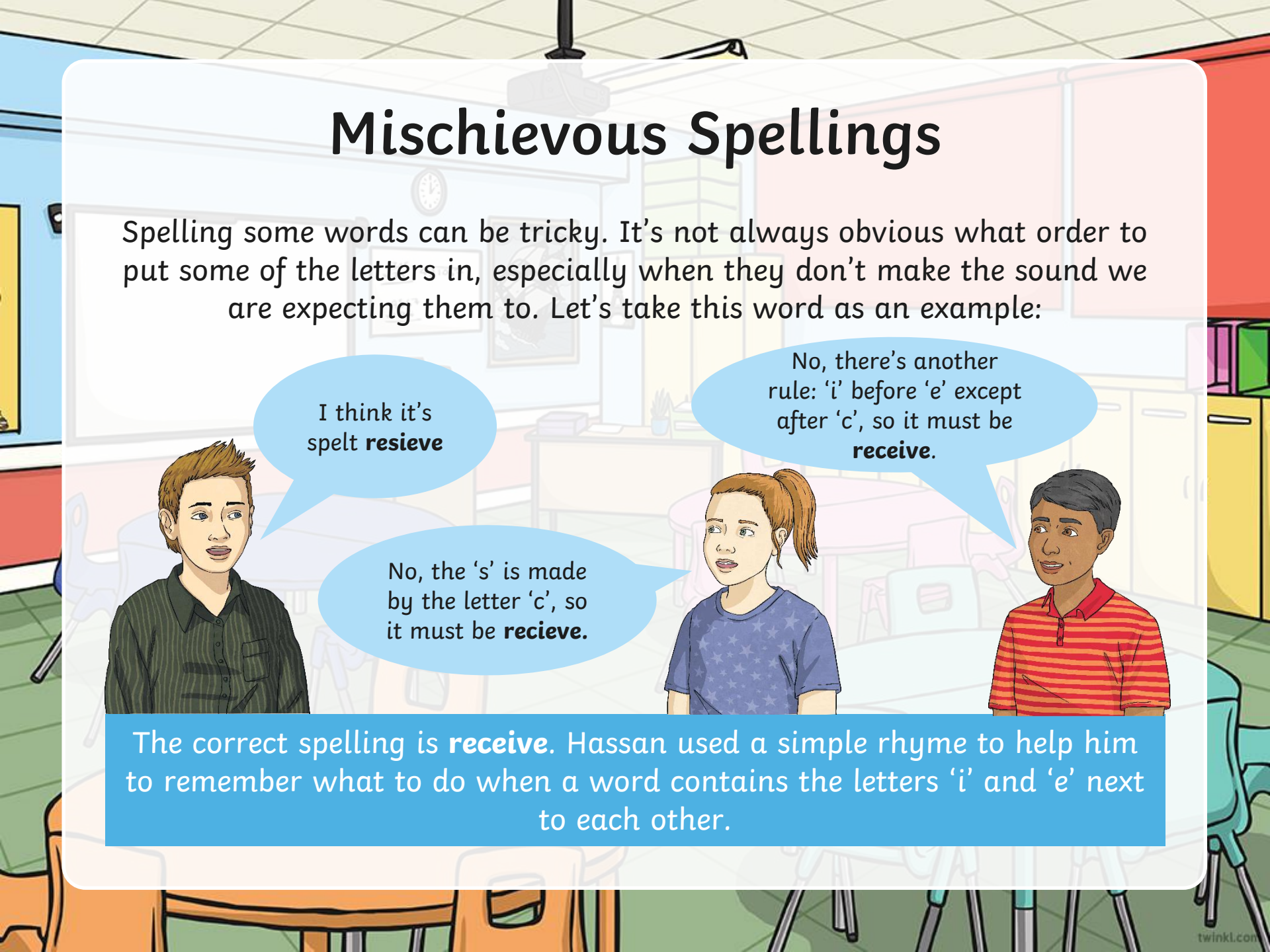


'I' before 'E' except
after 'C'

twinkl

Mischievous Spellings

Spelling some words can be tricky. It's not always obvious what order to put some of the letters in, especially when they don't make the sound we are expecting them to. Let's take this word as an example:

An illustration of three children in a classroom setting. A boy on the left is speaking, a girl in the middle is listening, and a boy on the right is also listening. They are surrounded by classroom furniture like desks and chairs. The background is a soft-focus view of a typical classroom.

I think it's
spelt **resieve**

No, the 's' is made
by the letter 'c', so
it must be **recieve**.

No, there's another
rule: 'i' before 'e' except
after 'c', so it must be
receive.

The correct spelling is **receive**. Hassan used a simple rhyme to help him to remember what to do when a word contains the letters 'i' and 'e' next to each other.

I Believe You've Heard of Me...

Who has heard of this common spelling rule before?

'i' before 'e' except after 'c'

In words which have an 'i' and an 'e' next to each other, the 'i' always comes first unless they come after the letter 'c'. If they do, then the 'e' comes first, followed by the 'i'.

The 'i' comes before the 'e' in the word But the 'e' comes before the 'i' in the word

bel*ie*ve

because there is no letter 'c' before the pair.

rece*ive*

because there is a letter 'c' before them.



'ie' or 'ei'? You Decide!

You have one minute to decide on the correct spelling of these words and write them on a whiteboard.

Remember: 'i' before 'e' except after 'c'.

rec__pt

n__ce

c__ling

dec__ve

ach__ve

sh__ld

Timer



Let's Review the Rules

Most words you encounter in day-to-day writing will use the 'ie' spelling pattern; however, it can make many different sounds. How many different sounds can you hear?

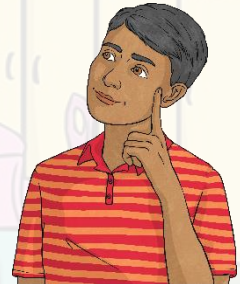
lie



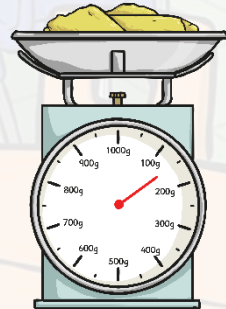
thief



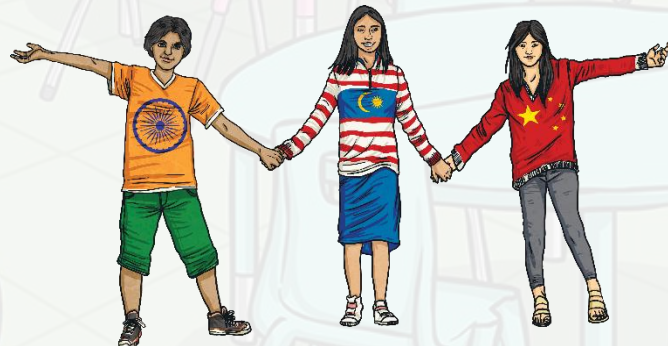
review



weigh



friend



Don't Let the Sound Deceive You

If you are writing a word and you are unsure if it is 'ie' or 'ei', stop and think:

Check for the letter 'c' first. If the letters come after one, you use the 'ei' spelling rule, regardless of sound.

The 'ie' spelling pattern is used *most* of the time if those letters make the sound 'igh' or 'ee' in a word. Here are some examples:

lie

thief

fiery

niece

The 'ei' spelling pattern is used *most* of the time if those letters make the sound 'ay' in the word. Here are some examples:

vein

weight

neighbour

veil

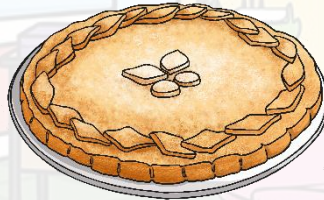
Let's Review the Rules

If a word **ends** the with letters 'i' and 'e', it will always be the 'ie' spelling pattern. Here are some examples:

lie



pie



tie



But if a word **begins** the with letters 'i' and 'e', it will always be the 'ei' spelling pattern. Here are some examples:

either



?



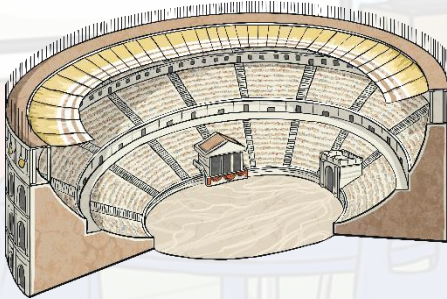
eight



Sorry to Deceive You...

The letter 'c' is usually followed by the 'ei' spelling pattern but, as with every spelling rule, there are some sneaky exceptions...

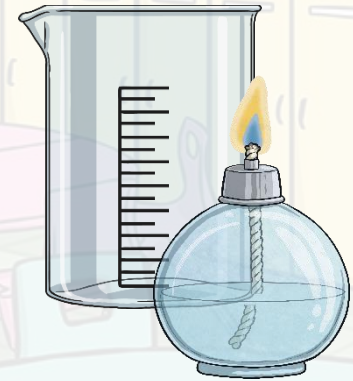
ancient



glacier



science



These exceptions just need to be learnt.

Sorry to Deceive You...

Sometimes, the 'ei' spelling pattern is used even when the word doesn't contain a letter 'c'...

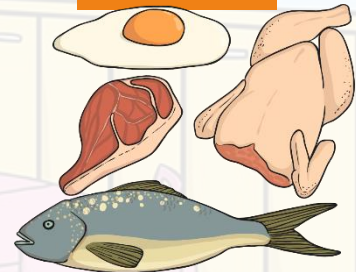
weird



height



protein



caffeine



seize

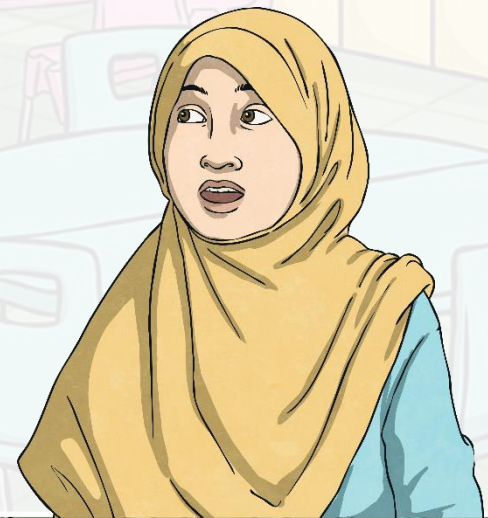


Again, these exceptions just need to be learnt.

Review

With all of the exceptions to the rule, it can be tricky to know when to use the mnemonic 'i' before 'e' except after 'c'. To give yourself the best chance of spelling a word correctly, remember this:

Use the 'i' before 'e' if it makes the sound 'ee',
and keep the 'e' after 'i' if it makes the sound 'igh'.
But if it makes the sound 'ay', 'e' goes first.





twinkl